

TRANSITIONAL DEVELOPMENT LAND AVAILABLE

Winnebago County

ILLINOIS

90.65 ACRES M/L



Matt Myers

217.617.7605 | IL LIC 475.209712

Matt.Myers@PeoplesCompany.com

Listing #18536

 **PEOPLES**TM
COMPANY
INTEGRATED LAND SOLUTIONS

Winnebago County

ILLINOIS

90.65 ACRES M/L

PEOPLES COMPANY IS PLEASED TO PRESENT

90.65 acres m/l of transitional development land in the city of South Beloit, Illinois. The farm consists of 89.06 FSA cropland acres m/l with the primary soil type being Kishwaukee silt loam and carrying a total PI of 127. The farm was recently improved



by converting non-tillable acres into production. The farm is leased for the 2025 crop season.

South Beloit, Illinois is a growing city located on the Illinois-Wisconsin border. The city is midway between Lake Michigan and the Mississippi River and has access to Interstates 90, 39, and 43. This provides easy access to some of the largest markets in the Midwest and makes South Beloit an attractive option for businesses looking to expand or establish a logistical hub.

ASKING PRICE: \$1,359,750

Highlights

Recently improved by converting non-tillable acres into production.

Currently zoned Commercial General and proposed Light Industrial.

Off Interstate 90 in South Beloit City limits.

Sewer and water are adjacent to the property with capacity.

30 minutes from Rockford, IL and an hour from Madison, WI.

Don't miss the opportunity to acquire a high-quality farm with development potential near South Beloit.

Contact the listing agent for more details.

Matt Myers

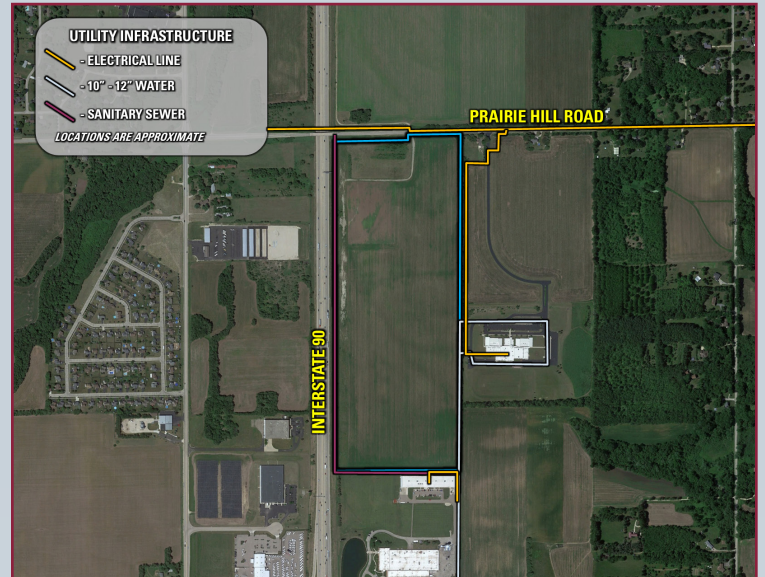
217.617.7605 | IL LIC 475.209712

Matt.Myers@PeoplesCompany.com



The farm is a prime candidate for future development as there is growing demand from city planners and the Greater Beloit Economic Development Corporation. The Farm is currently zoned Commercial General and proposed as IL – Light Industrial. The City of South Beloit’s future land use plan identifies the property as part of the I-90 Commercial Center for regional commercial development. There is also potential interest from neighboring landowners. There is a PBC Linear manufacturing facility to the south of the property and the Willowbrook Middle School to the east of the farm. Existing utilities include a 10” to 12” water line on the south side of the property, a sanitary sewer line running along the south and west sides of the Farm, and electrical lines running along north, east and a portion of the south side of the farm.

Infrastructure Map



CITY OF SOUTH BELOIT
WINNEBAGO COUNTY, IL

ZONING MAP

01/18/2022

ZONING DISTRICTS

01 - SINGLE-FAMILY RESIDENTIAL	04 - MIXED-USE/RECREATION RESIDENTIAL	07 - COMMERCIAL BUSINESS DISTRICT	08 - DOWNTOWN/HIGH-RISE/RECREATION DISTRICT	09 - CITY OF SOUTH BELOIT
02 - LOW-DENSITY FARM RESIDENTIAL	05 - PUBLIC/UNIVERSITY/INSTITUTIONAL	08 - LIGHT INDUSTRIAL	09 - DOWNTOWN OVERLAY DISTRICT	10 - URBAN OVERLAY DISTRICT
03 - TRACT FARM RESIDENTIAL	06 - COMMERCIAL RESIDENTIAL	09 - HEAVY INDUSTRIAL	10 - GATEWAY OVERLAY DISTRICT	11 - FARM OVERLAY DISTRICT
04 - TRACT FARM RESIDENTIAL	07 - COMMERCIAL GENERAL	10 - URBAN TRANSIT/TRANSIT	11 - WELLHEAD PROTECTION OVERLAY DISTRICT	12 - CITY OF SOUTH BELOIT
05 - TRACT FARM RESIDENTIAL	08 - EDUCATIONAL/RECREATION			13 - FARM OVERLAY DISTRICT
				14 - CITY OF SOUTH BELOIT

OTHER FEATURES

15 - FARM OVERLAY DISTRICT	16 - CITY OF SOUTH BELOIT
17 - FARM OVERLAY DISTRICT	18 - CITY OF SOUTH BELOIT
19 - FARM OVERLAY DISTRICT	20 - CITY OF SOUTH BELOIT
21 - FARM OVERLAY DISTRICT	22 - CITY OF SOUTH BELOIT
23 - FARM OVERLAY DISTRICT	24 - CITY OF SOUTH BELOIT
25 - FARM OVERLAY DISTRICT	26 - CITY OF SOUTH BELOIT
27 - FARM OVERLAY DISTRICT	28 - CITY OF SOUTH BELOIT
29 - FARM OVERLAY DISTRICT	30 - CITY OF SOUTH BELOIT
31 - FARM OVERLAY DISTRICT	32 - CITY OF SOUTH BELOIT
33 - FARM OVERLAY DISTRICT	34 - CITY OF SOUTH BELOIT
35 - FARM OVERLAY DISTRICT	36 - CITY OF SOUTH BELOIT
37 - FARM OVERLAY DISTRICT	38 - CITY OF SOUTH BELOIT
39 - FARM OVERLAY DISTRICT	40 - CITY OF SOUTH BELOIT
41 - FARM OVERLAY DISTRICT	42 - CITY OF SOUTH BELOIT
43 - FARM OVERLAY DISTRICT	44 - CITY OF SOUTH BELOIT
45 - FARM OVERLAY DISTRICT	46 - CITY OF SOUTH BELOIT
47 - FARM OVERLAY DISTRICT	48 - CITY OF SOUTH BELOIT
49 - FARM OVERLAY DISTRICT	50 - CITY OF SOUTH BELOIT
51 - FARM OVERLAY DISTRICT	52 - CITY OF SOUTH BELOIT
53 - FARM OVERLAY DISTRICT	54 - CITY OF SOUTH BELOIT
55 - FARM OVERLAY DISTRICT	56 - CITY OF SOUTH BELOIT
57 - FARM OVERLAY DISTRICT	58 - CITY OF SOUTH BELOIT
59 - FARM OVERLAY DISTRICT	60 - CITY OF SOUTH BELOIT
61 - FARM OVERLAY DISTRICT	62 - CITY OF SOUTH BELOIT
63 - FARM OVERLAY DISTRICT	64 - CITY OF SOUTH BELOIT
65 - FARM OVERLAY DISTRICT	66 - CITY OF SOUTH BELOIT
67 - FARM OVERLAY DISTRICT	68 - CITY OF SOUTH BELOIT
69 - FARM OVERLAY DISTRICT	70 - CITY OF SOUTH BELOIT
71 - FARM OVERLAY DISTRICT	72 - CITY OF SOUTH BELOIT
73 - FARM OVERLAY DISTRICT	74 - CITY OF SOUTH BELOIT
75 - FARM OVERLAY DISTRICT	76 - CITY OF SOUTH BELOIT
77 - FARM OVERLAY DISTRICT	78 - CITY OF SOUTH BELOIT
79 - FARM OVERLAY DISTRICT	80 - CITY OF SOUTH BELOIT
81 - FARM OVERLAY DISTRICT	82 - CITY OF SOUTH BELOIT
83 - FARM OVERLAY DISTRICT	84 - CITY OF SOUTH BELOIT
85 - FARM OVERLAY DISTRICT	86 - CITY OF SOUTH BELOIT
87 - FARM OVERLAY DISTRICT	88 - CITY OF SOUTH BELOIT
89 - FARM OVERLAY DISTRICT	90 - CITY OF SOUTH BELOIT
91 - FARM OVERLAY DISTRICT	92 - CITY OF SOUTH BELOIT
93 - FARM OVERLAY DISTRICT	94 - CITY OF SOUTH BELOIT
95 - FARM OVERLAY DISTRICT	96 - CITY OF SOUTH BELOIT
97 - FARM OVERLAY DISTRICT	98 - CITY OF SOUTH BELOIT
99 - FARM OVERLAY DISTRICT	100 - CITY OF SOUTH BELOIT

PC PEOPLESTM
COMPANY
INTEGRATED LAND SOLUTIONS



12119 Stratford Drive
Clive, IA 50325



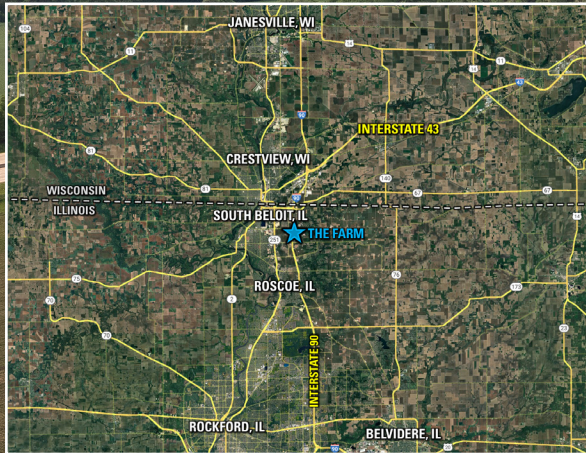
PeoplesCompany.com
Listing #18536

TRANSITIONAL DEVELOPMENT LAND AVAILABLE

Winnebago County

ILLINOIS

90.65 ACRES M/L



Directions

From South Beloit, Illinois: Head east on Gardner Street then take a right onto N 2nd Street and continue for 1.5 miles. Then, turn left/east onto Prairie Hill Road and in 1 mile the farm will be to the right/south.

All information, regardless of source, is deemed reliable but not guaranteed and should be independently verified. The information may not be used for any purpose other than to identify and analyze properties and services. The data contained herein is copyrighted by Peoples Company and is protected by all applicable copyright laws. Any dissemination of this information is in violation of copyright laws and is strictly prohibited.

Matt Myers

217.617.7605 | IL LIC 475.209712
Matt.Myers@PeoplesCompany.com

Listing #18536

